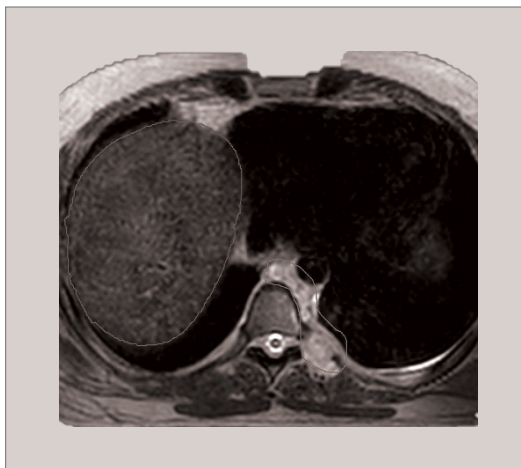


# ISTRO 2021

Saturday, October 2, 2021

Coralville Marriott  
Hotel and Conference Center  
Oakdale Ballroom 123  
300 East 9th Street  
Coralville IA, 52241  
[www.marriott.com/cidic](http://www.marriott.com/cidic)

## Sarcoma



### David G. Kirsch, MD, PhD Radiation Oncologist

Barbara Levine University Professor,  
Professor and Vice Chair for Basic &  
Translational Research, Department of  
Radiation Oncology,  
Duke University, Durham, NC

#### Time and Date:

The conference begins at 8:00am and ends at 2:40pm on Saturday, October 2, 2021.

#### Location:

The conference will be held in the Marriott Hotel and Conference Center, Oakdale Ballroom 123, 300 East 9th Street, Coralville, 52241.  
Telephone 319-688-4000.

#### Parking:

Parking is available in the parking ramp adjacent to the hotel for \$8 for the all day event or for \$1 an hour.

#### Fees:

Registration fees include program materials, luncheon, refreshment breaks and CE recording.

Radiation Oncologists	\$150
Medical Physicists	\$100
Dosimetrists	\$35
Radiation Therapists	\$25
Nurses	\$25
Administrators	\$30

#### Register online:

<https://uiowa.cloud-cme.com/course/courseoverview?P=5&EID=41406>

#### Accommodation:

A block of rooms has been reserved at the Marriott for \$113/ per night. Please reserve by Friday September 10, 2021  
Marriott Phone: (319) 688-4000.

#### Queries:

Queries may be directed to Ms. Shawn Reynolds  
E-mail: [shawn-reynolds@uiowa.edu](mailto:shawn-reynolds@uiowa.edu)  
Tel: 319-356-2699  
Fax: 319-356-1530

*Education program provided by:*

*The Department of Radiation Oncology  
The Roy J. and Lucille A. Carver College of Medicine  
The University of Iowa.*

#### Accessibility Statement

Individuals with disabilities are encouraged to attend all University of Iowa-sponsored events. If you are a person with a disability who requires a reasonable accommodation in order to participate in this program, please contact Ms. Shawn Reynolds in advance at 319-356-1530.

## Agenda

Saturday, October 2, 2021

7:30-8:00 AM	<b>Registration/Breakfast</b>
8:00-8:15 AM	<b>Opening remarks, introduction of David Kirsch, Bryan Allen, MD, PhD</b>
8:15-9:15 AM	<b>Sarcoma management: role of radiation, clinical trials, new developments, future directions</b> <i>David Kirsch, MD, PhD</i>
9:15-9:55 AM	<b>Chemotherapy and immunotherapy in the management of sarcoma</b> <i>Varun Monga, MD</i>
9:55-10:10 AM	Break
10:10-10:50 AM	<b>Surgical management of sarcoma. A surgeon's thoughts on neoadjuvant vs adjuvant radiation</b> <i>Benjamin Miller, MD</i>
10:50-11:20 AM	<b>Review of sarcoma pathologies and outcomes</b> <i>Munir Tanas, MD</i>
11:20-12:00 PM	<b>Pediatric sarcoma review (include MR linac management/issues if possible)</b> <i>Margaret Kozak, MD</i>
12:00-1:00 PM	Lunch and Business Meeting
1:00-1:30 PM	<b>Sarcoma basic research for a clinical audience</b> <i>Rebecca Dodd, PhD</i>
1:30-2:00 PM	<b>Practical MR Linac Applications</b> <i>Mark Smith, MD</i>
2:00-2:30 PM	<b>Clinical implementation of an MR-linac: A physics perspective</b> <i>Daniel Hyer, PhD</i>
2:30-2:40 PM	<b>Closing Remarks</b> <i>Bryan Allen, MD, PhD</i>

## Registration

<https://uiowa.cloud-cme.com/course/courseoverview?P=5&EID=41406>

### Credit Physicians

ACCREDITATION: This activity has been planned and implemented in accordance with the accreditation requirements and policies of the Accreditation Council for Continuing Medical Education (ACCME) through the joint providership of the University of Iowa Carver College of Medicine and the Iowa Society for Therapeutic Radiation Oncology. The Carver College of Medicine is accredited by the ACCME to provide continuing medical education for physicians.

CREDIT DESIGNATION: The University of Iowa Carver College of Medicine designates this live activity for a maximum of **5 AMA PRA Category 1 Credit(s)**<sup>™</sup>. Physicians should claim only the credit commensurate with the extent of their participation in the activity.

DISCLOSURE POLICY: Everyone in a position to control the content of this educational activity will disclose to the accredited provider all financial relationships with ineligible companies whose primary business is producing, marketing, selling, re-selling, or distributing healthcare products used by or on patients. All relevant financial relationships will be mitigated.

CLAIMING CREDIT: Attendees seeking an *AMA PRA Category 1 Credit(s)*<sup>™</sup> certificate will self-claim their hours of participation within the online evaluation. Certificates will be available to print or save immediately upon submission of the evaluation. Instructions will be provided the day of the conference.

Credit of up to **X SA-CME units** is being applied for through the American Board of Radiology.

### Nurse

Effective March 18, 2020, Iowa nurses may use participation in ACCME-accredited education toward their CE requirement for licensure. A certificate of participation will be available after successful completion of the course. (Nurses from other states should confirm with their licensing boards that this activity meets their state's licensing requirements.)

### Physicists

This meeting has applied for approval of **x MPCEC hours**.

### Radiation Therapists and Dosimetrists

For Therapists, **XX CEs** have been applied for through the American Society of Radiologic Technologists (ASRT). For Dosimetrists, **XX CEs** have been applied for through the Medical Dosimetrist Certification Board (MDCB).

### Non-discrimination statement

The University of Iowa prohibits discrimination in employment, educational programs, and activities on the basis of race, creed, color, religion, national origin, age, sex, pregnancy, disability, genetic information, status as a U.S. veteran, service in the U.S. military, sexual orientation, gender identity, associational preferences, or any other classification that deprives the person of consideration as an individual. The university also affirms its commitment to providing equal opportunities and equal access to university facilities. For additional information on nondiscrimination policies, contact the Director, Office of Equal Opportunity and Diversity, The University of Iowa, 202 Jessup Hall, Iowa City, IA, 52242-1316, 319-335-0705 (voice), 319-335-0697 (TDD), [diversity@uiowa.edu](mailto:diversity@uiowa.edu)

## Guest Speaker

**David Kirsch, MD, PhD**

Barbara Levine University Professor, Professor and Vice Chair for Basic & Translational Research, Department of Radiation Oncology, Duke University, Durham, NC

### Carver College of Medicine

*Bryan Allen, MD, PhD*

*Rebecca Dodd, PhD*

*Daniel Hyer, PhD*

*Margaret Kozak, MD*

*Benjamin Miller, MD*

*Varun Monga, MD*

*Mark Smith, MD*

*Munir Tanas, MD*

### Purpose and Intended Audience

The target audience includes radiation oncologists, nurses, physicists, therapists and dosimetrists.

### Education Objectives:

1. Learners will justify their multidisciplinary management of sarcoma patients with the current published evidence provided during the course.
2. Learners will recognize patient cases that may benefit referral to cancer center for work-up
3. Learners will identify patients who should receive primary surgical treatment for sarcoma and when adjuvant radiation treatment is needed.
4. Learners will be able to identify safe, effective, radiation treatment plans for sarcoma.
5. Learners will be able to discuss developing sarcoma treatment approaches currently being assessed in clinical trials.
6. Learners will identify which patients are appropriate for MR Linac radiation treatment

### Planning Committee:

Bryan Allen, MD, PhD

John M. Buatti, MD